

# Monmouthshire Health Walk - Tintern Walk

## DISTANCE

2.5 miles/ 4 kilometres

## TIME

1 hour 15 mins

## GRADE

Relatively easy with a short, steep uphill section and a short downhill section which is rough under foot

## STARTING POINT

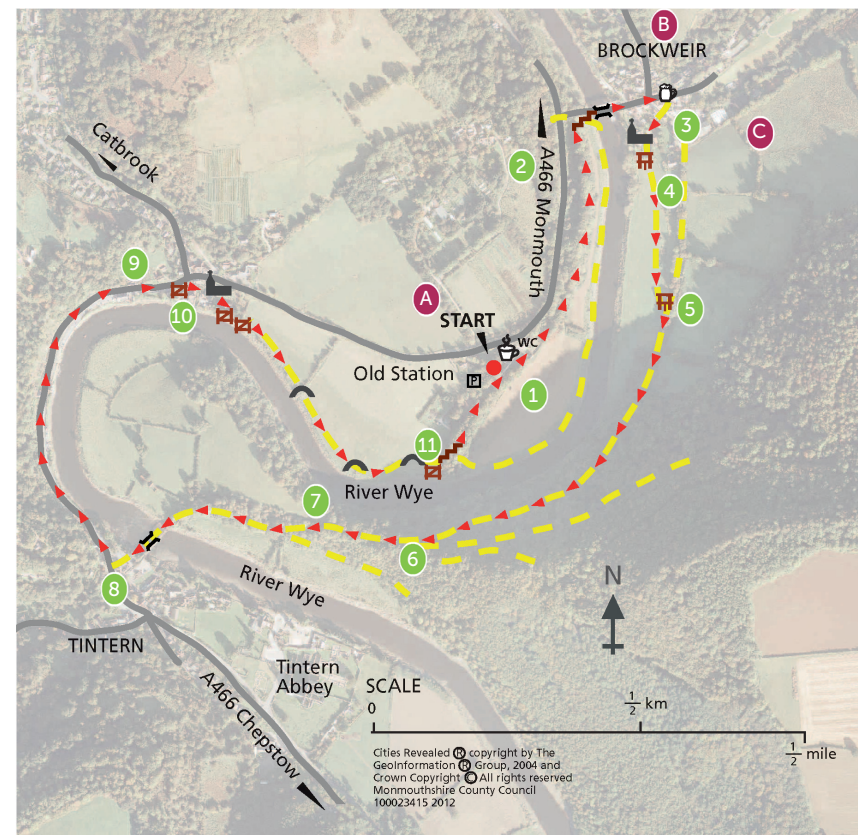
Old Station, Tintern Car Park

## THE ROUTE

- 1 Walk along the platform in front of the café. Take the path from the end of the platform and follow it through the woods
- 2 Climb the 23 steps to the road. Turn right and cross Brockweir Bridge
- 3 Turn right at the pub. Then, after 30 metres, turn right again on a footpath signed 'Brockweir Moravian Church'. Follow the tarmac path to the left and, just before the church door, take the footpath to the left.
- 4 Cross the stile and bear diagonally left across the field, keeping the hedge on your left
- 5 Cross a stile on the left and turn right to follow a stony path uphill through woodland
- 6 At a junction of several paths with a low stone wall on your right, continue straight ahead, down a stony track to join a disused railway line
- 7 Turn right on the railway track and follow it over the bridge into Tintern
- 8 Turn right and walk along the main road. Cross the road with care to follow the pavement on the left. Where it ends, cross back to the right and follow the pavement on the right
- 9 Just before the Catbrook road sign, turn right on a lane signed Wye Valley Walk and St Michael's Church
- 10 Walk through the churchyard and take a footpath along the river bank, passing through several gates
- 11 Go through a gate and up the steps. Turn left on the disused railway and follow this back to Tintern Station

## POINTS OF INTEREST

- A** Tintern was one of four stations on the Wye Valley Railway Line, which opened in 1876. It was a large station, with three platforms because the railway company hoped to attract tourists to Tintern Abbey. The line closed to passengers in 1959 and to freight in 1964.
- B** Brockweir is named after Brockmael, a dark ages prince of Gwent. Located at the highest point of the tide, it could accommodate sea-going ships and it became an important port for the export of produce from Herefordshire and the Forest of Dean. It was also a centre for ship building. In the 19th century there were 16 public houses and the town had a reputation for lawlessness.
- C** Brockweir Moravian Church was built in the 1830s. It was the first of a number of non-conformist churches built in the town.



### KEY

	Walk route		Stile		Bridge		Pub
	Public right of way		Gate		Footbridge		Cafe
	Roads		Underpass		Steps		Village Hall
	Parking		Bench		Church		Railway line

