



Monmouth to Redbrook

Up, Down and Along!

Distance and Timings

Length of Walk: 6.3 miles - 10.1km

Approximate time taken to walk route: 3 - 4 hours

References

Start: Monmouth Town Centre (Grid Reference: SO 509 128)

Ordnance Survey Map: OS Explorer 1:25 000 Sheet OL14 Wye Valley & Forest of Dean

Facilities Available

Monmouth can be reached by bus. Contact www.traveline.org.uk or telephone 08712 002233, text 84268.

Various pay & display car parks are available in Monmouth including Glendower Street car park (Max. stay - 4 hours)

Public toilets in Agincourt Street.

Numerous pubs, cafes and shops in Monmouth.

The Bell and The Boat are both just off the route at Redbrook.

Accessibility / Terrain

No of Stiles: None

There are some slopes on the Offa's Dyke Path.

The Wye Valley Walk runs along the riverside. Paths are rough in places.



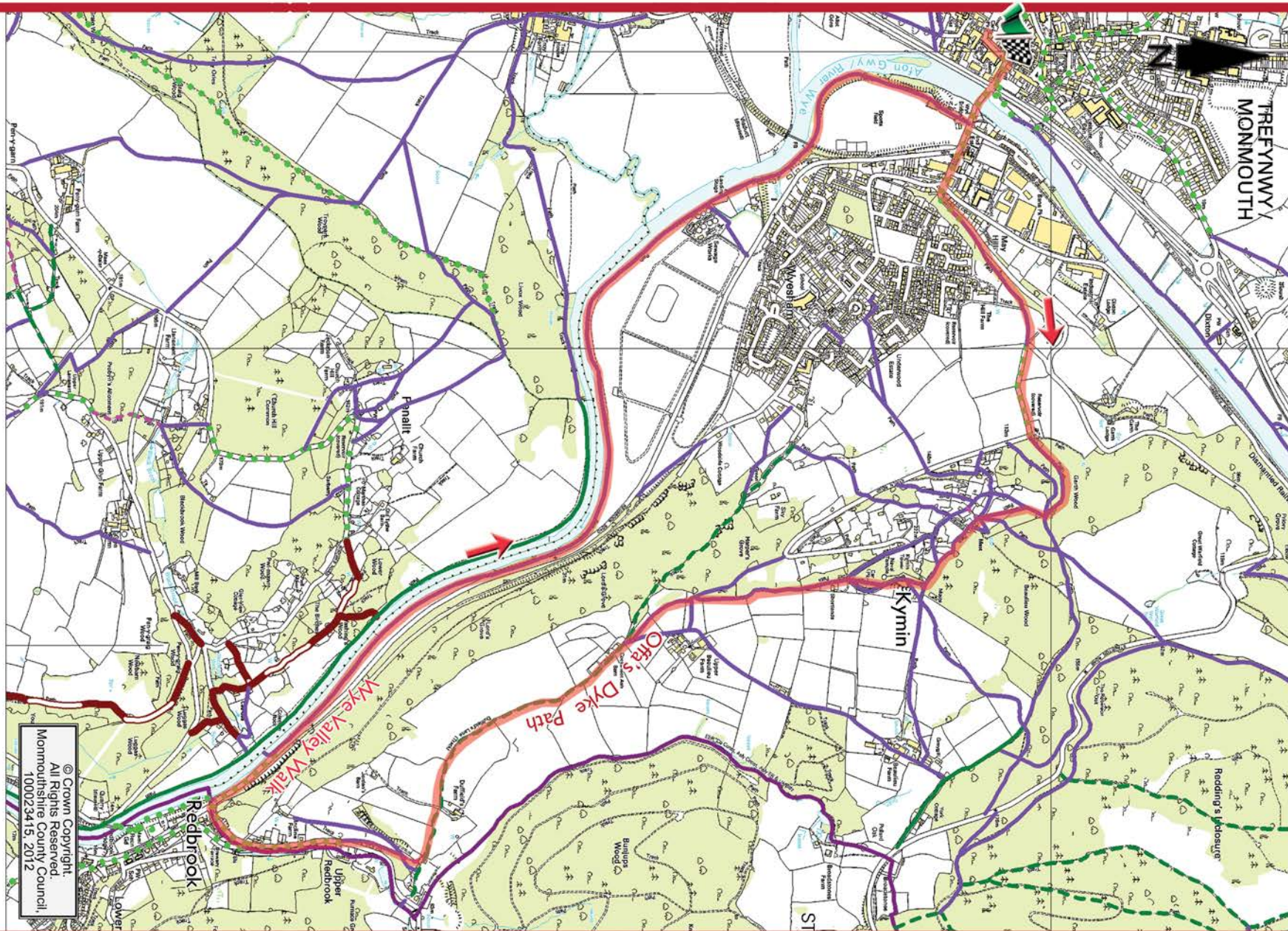
Part of the Wye Valley Walk, running beside the River Wye

Brief Route Details / Points of Particular Interest

The route leaves Monmouth via the Wye Bridge and Cinderford Road on the Offa's Dyke Path up to the Kymin before the long descent into Redbrook. Here you join the Wye Valley Walk for its return along the river to Monmouth 4km upstream.

Points of interest include the Kymin with its Naval Temple. The views across Wales are fantastic.

You will find 'leaping salmon' waymarks indicating the Wye Valley Walk, while Offa's Dyke Path has the national trail symbol of an acorn along its route. For further information on Offa's Dyke Path see www.nationaltrail.co.uk/offasdyke



© Crown Copyright
All Rights Reserved
Monmouthshire County Council
100023415, 2012



- : Start
- : Finish
- : Direction
- : Footpath
- : Bridleway
- : Restricted Byway
- : Promoted Route
- : Unclassified Road
- : Parking
- : Permissive Path

This route is regularly checked by Monmouthshire Countryside Service Volunteers but if you find any problems please email rightsofway@monmouthshire.gov.uk
Enjoy your walk.


monmouthshire
 sir fynwy


 Cyngor Cefn Gwlad Cymru
 Countryside Council for Wales


 Noddir gan
 Lywodraeth Cymru
 Sponsored by
 Welsh Government