



Funded by
UK Government

Borough Theatre

Address:

The Town Hall
Cross Street
Abergavenny
NP7 5HD

Contact Telephone:

01873 850805



Theatre Entrance

What3Words:

- Main building entrance – guesswork.hogs.deeds
- Box Office entrance in the Market Hall – awards.fortified.skins

Borough Theatre is located within the second and third-floors of the Town Hall, on Cross Street. It shares a level entrance with the Abergavenny Library.



Market Hall



Theatre and Library Entrance

Box Office Opening Times:

- Tuesday: 10:00 – 13:00
- Wednesday: 10:00 – 13:00
- Thursday: 10:00 – 13:00
- Friday: 10:00 – 13:00

Doors open 60 minutes before the start of each show



On site assistance can be provided by Theatre staff.



Local Transport Links:

Bus Stops are available along Lion Street, within 0.1 miles of the main entrance and along the A40, within 0.2 miles of the main entrance.

Abergavenny Bus Station is 0.3 miles away.

Information about Abergavenny bus station can be found here:

<https://www.visitmonmouthshire.com/information/product-catch-all/abergavenny-bus-station-p1503191>

Abergavenny Train Station is 0.6 miles away.

Information about Abergavenny Train station and travel routes can be found here:

<https://tfw.wales/places/stations/abergavenny>



Parking:

The Brewery Car Park is positioned behind the Borough Theatre building, which vehicles can enter through Lion Street.

- This car park is paid, for a maximum of 2 hours.
- Accessible bays are provided.
- Blue Badge holders have free parking in any bay.
- The route towards the theatre along Market Street is sloped, and in excess of 50m from the main entrance.

Bus Station Car Park offers long term stay and is accessed by the A40.

- Accessible bays are provided.
- Blue Badge holders have free parking in any bay.

Further information regarding transport to Abergavenny can be found here:

<https://www.visitabergavenny.co.uk/directions/getting-here/>



Drop off can be requested; however, Cross Street is closed to vehicle access between 10:00 and 16:00.



On-Street accessible parking bays are provided on Cross Street, dropped kerbs are not directly available to the pedestrian pathway.



On-Street Accessible Parking

Pedestrian Routes:

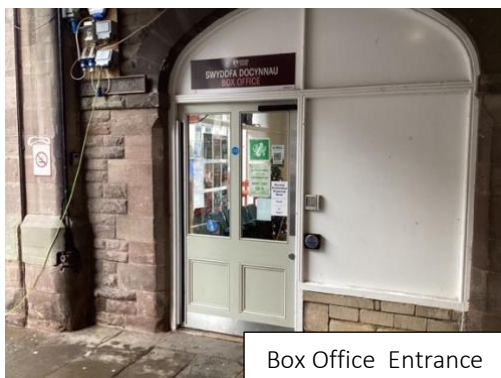
- Cross Street features pedestrian pathways with widths greater than 1200mm. A slight incline is along this route.
- If approaching from Market Street, pathways narrow to 880mm.
- Although new vehicle access to Cross Street is prevented between 10:00 – 16:00, vehicles may leave via Market Street. Pedestrians using the road should beware of potential oncoming traffic.



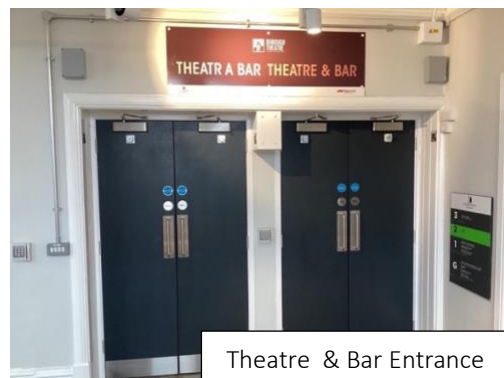
Pedestrian Routes

Entrances:

- The main entrance on Cross Street is in excess of 800mm. This entrance is side hung and manual.
- The Box Office entrance features a powered door, more than 800mm wide when open.
- The control is to the right of the door, at a height no greater than 1000mm.
- The entrance doors to the Theatre are more than 800mm wide when both doors are secured open.



Box Office Entrance



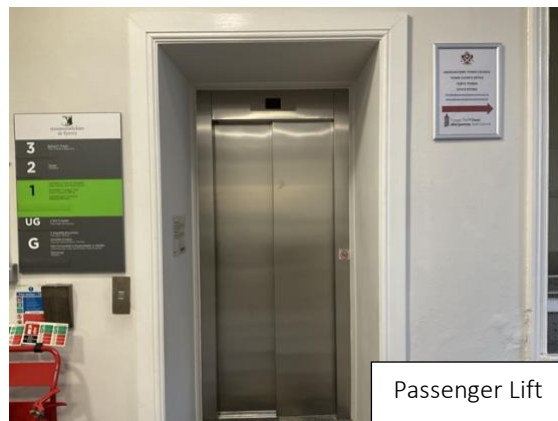
Theatre & Bar Entrance



The Theatre is on the second floor, with the Balcony located on the third floor. This can be accessed via the main stairwell or passenger lift.



Stairwell to first-floor

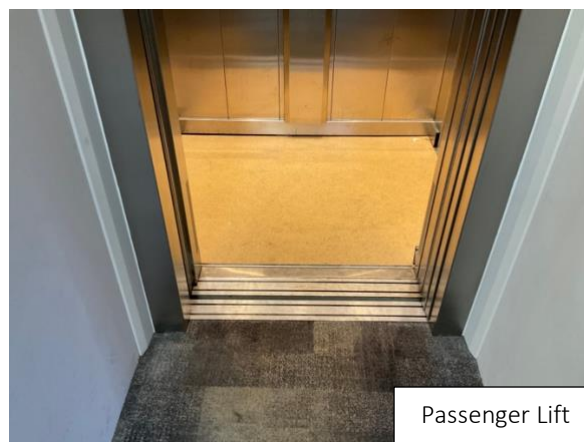


Passenger Lift



Passenger Lift:

- The lift has a compartment of 1000mm deep and 1400mm wide.
- The lift can be accessed by The Borough Theatre Entrance, as well as via the Tourist Information Centre.
- Three openings are provided to this lift. Limited turning space for larger mobility scooters is available.
- A wheelchair can be borrowed from the Tourist Information Centre if required.
- Braille and tactile controls are provided.
- The lift shows the floor number at each floor.
- Lighting is good.
- From the lift to the theatre entrance, a level route is provided.



Passenger Lift



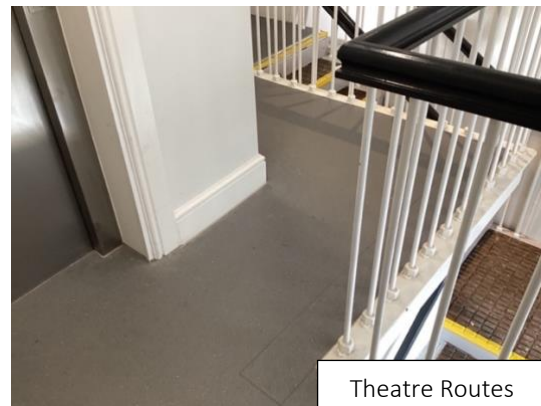
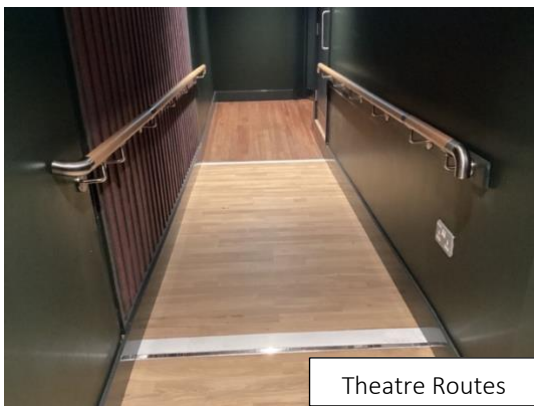
Reception:

- The Box Office reception featured a counter approximately 900mm from ground floor level.
- No induction loop system is available.



Main Routes:

- The approaches to the auditorium have ramps provided, approximately 1200mm wide.
- The approach to the Circle Door D from the lift has a narrow turning, width approximately 820mm.



General WC Facilities:

- General WC facilities are available on the second floor, with additional WC facilities provided on the first floor.
- The additional first floor facilities are reached via a flight of steps.



- Facilities for ambulant disabled people are provided to WC facilities on the second floor and to the additional WCs on the first floor.
- The approach to the ambulant WC on the first floor is narrow, a single step is provided.



Accessible WC Facilities:

- An accessible WC facility is provided on the second floor.
- A level route toward the accessible WC is provided.
- The compartment is 2049mm by 2014mm.
- The direction of transfer onto the toilet is from the left.
- A cord alarm system is available.



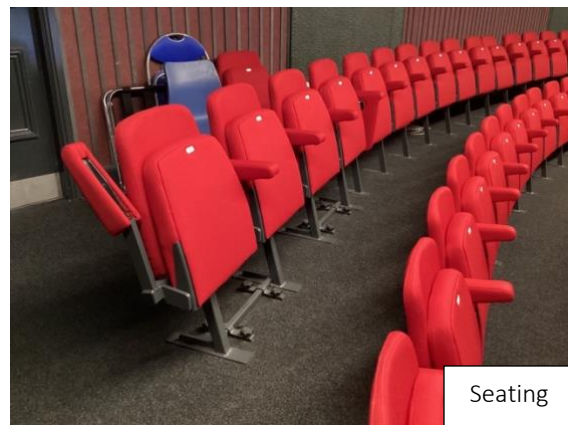
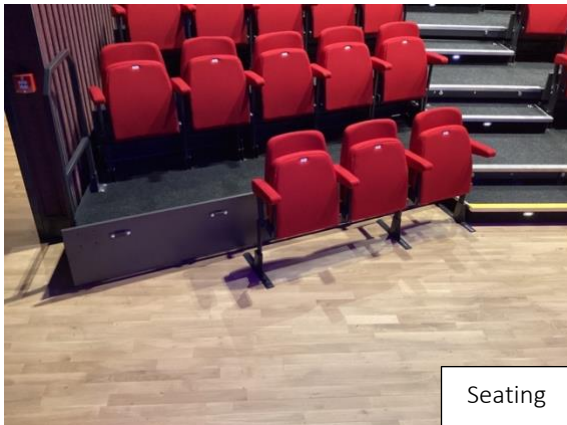
Lighting:

- Lighting levels are good across the theatre with no low levels of lighting.
- Lighting is lowered during performances.



Services and Facilities:

- Seating is available to the front of the stage in the Auditorium at either side. Detachable seating is available.
- Detachable seating is available in the Balcony.
- A manual wheelchair is available for loan.



Concessions available:

- Hynt cardholders are entitled to a ticket free of charge for a personal assistant or carer <https://www.hynt.co.uk/en/join/apply/>.

Community Room:

- A meeting room is available, which is approximately 9240mm by 4090mm.
- An induction loop system is not available.

Acoustics:

- No unexpected noises are provided to the Theatre.
- Noise levels vary depending on the performance.
- Ear plugs and ear defenders are provided.



- Some BSL and/or captioned performances are available.
- Contact Box Office for programme details boxofficeboroughtheatre@monmouthshire.gov.uk.



Further information:

- The fire alarm system features flashing beacons.
- Emergency evacuation procedures for disabled visitors are provided.
- Refuge areas are provided on each floor. Communication systems are provided.
- Evacuation chairs and sledges are provided to assist with egress from the first and second floors.

